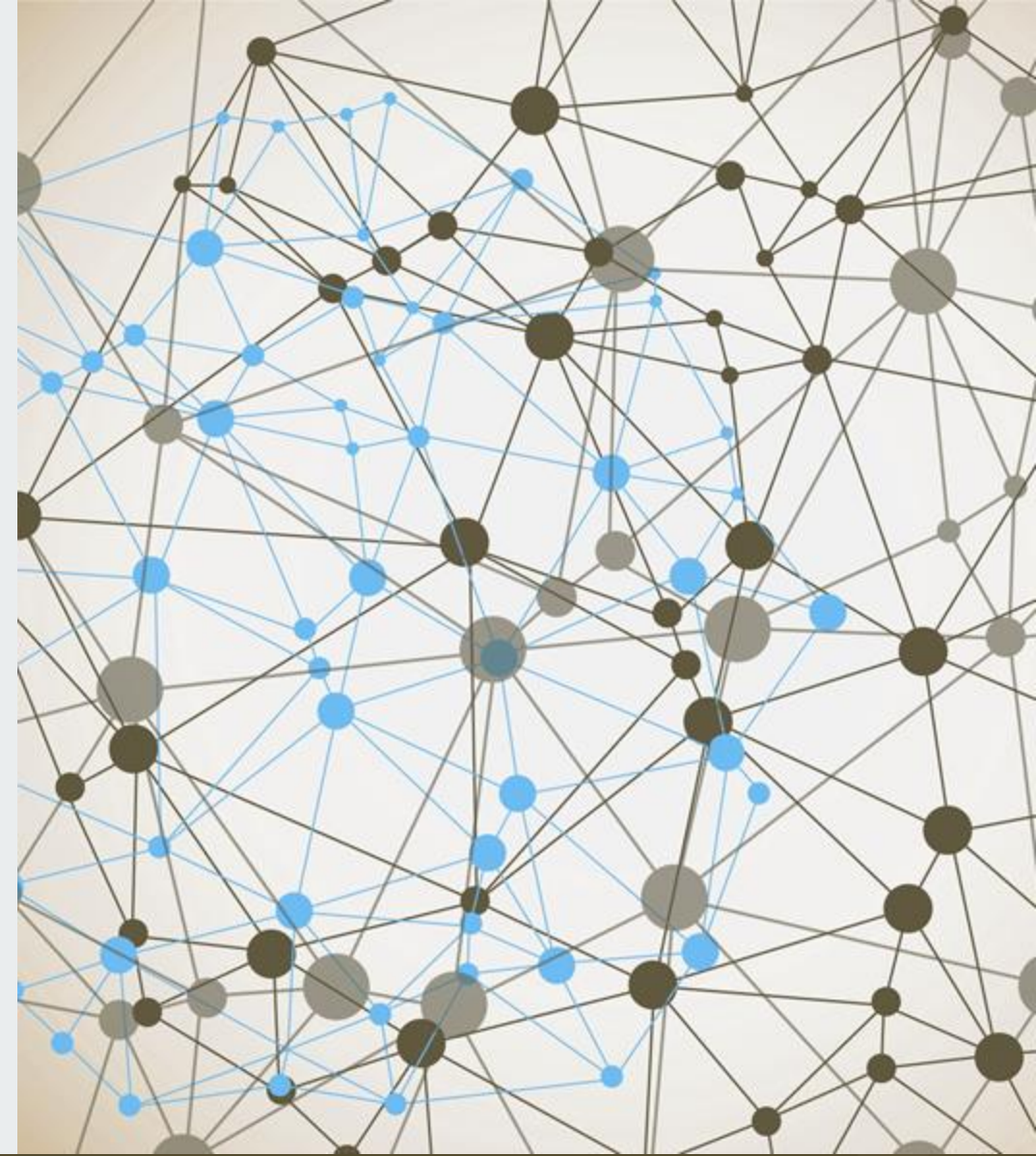


Task Force: The Future of the SCWS Assembly

November 16, 2024



Future SCWS Assembly Thought Force

- At the November 2023 Election Assembly, we announced that the SCWS Future Assembly Thought Force had finished its work and that we would become a Task Force whose members are the “do-ers” who would research and implement the structure of our Assemblies and other Area meetings as Covid abated.
- Realizing that costs would increase significantly as we returned to In-Person or Hybrid meetings, many Board officers and coordinators felt that we needed to get Group Representatives’ approval for these increased expenses. That’s the purpose of this vote.

Types of Assembly

- In Person
- Advantages: Fellowship, direct communication, historic precedents, many Al-Anon members prefer face to face
- Disadvantages: Possible future health risks, expense of venues, travel time necessary to attend

Hybrid Assembly

- Advantages: Best of both worlds, people can meet in person, or they can join the assembly remotely, thus saving travel time and avoiding health risks.
- Disadvantages: Cost and preparation time for the technology needed. Challenges of combining the two formats.
- Resentment at the awkwardness of communication, feeling that the in-person or Zoom audience is getting short shrift.

Virtual Assembly – Zoom or other platforms

- Advantages: Low cost, convenience—no travel, and attend from home. Ease of communication.
- Disadvantages: No human contact, no personal fellowship, technical difficulties, interpretation challenges.
- Some members simply won't participate electronically.
- Remote service events may inhibit members' inclination to take service positions.

Additional Costs for In-Person Assemblies

- In-person only
 - Meeting venue \$500 +
 - Hotel and mileage - \$4,000
 - Reimbursements \$1,000 +
 - Venue minimum cost based on Glendale. Hotels much more expensive.
- Hybrid
 - Meeting venue \$500 +
 - Hotel and mileage - \$2,000
 - Reimbursements \$1,000
 - Tech support \$500+
 - Spanish Translation \$700

Mix and match options for Assemblies

- SCWS might have one Assembly a year on Zoom, the second in person.
- Maybe we do the Assemblies in person, and the AWSC meetings on Zoom.
- If we need a “mini assembly” to discuss an important issue, maybe that one is via Zoom.

Assembly venues

- Historically, SCWS has held its Assemblies in a central location in the area. In the last 20 years, we were first in Fullerton, and more recently in Glendale. Most GRs traveled there for the day, a few members stayed overnight in hotels.
- Many members were getting tired of Glendale when the pandemic struck. There was a perception that the space was not large enough and the technology outdated.

Venues (continued)

- Should we search for a new venue central to the Area that is larger and more modern?
- Many Areas move their Assemblies around their areas and hold them in different hotels or other meeting places. Sometimes a specific district might host an Assembly. Travel arrangements often necessitate having a coordinator on the Board, or the Area Chair does the event planning in some areas.

Venues and timing

- In many areas that move their Assemblies and have them in hotels, these Assemblies are two or three days, and either Friday and/or Saturday night.
- Advantage: Lots of time for fellowship and activities/workshops. Sometimes these are connected to AA conventions or Assemblies.
- Disadvantage: The cost of hotel rooms and meeting rooms. Members unwilling to come to longer Assemblies.

Summary

- We need to continue our KBDM to find out what our members want.
- We will always consider carefully the cost of the various options and be sure that they fit within the SCWS budget.
- Now GRs will vote to accept the additional costs that will come up as the SCWS Area returns to in-person meeting options.